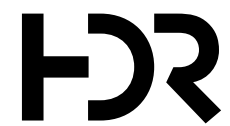
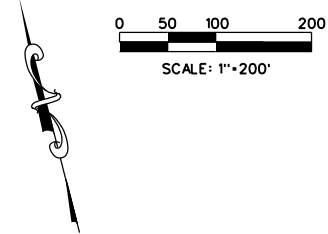




### LEGEND

- DELINEATED WETLANDS
- PRESENT RIGHT OF WAY
- EXISTING PROPERTY LINES
- PROPOSED NEW RW
- EXISTING ROADWAY - RETAIN
- PROPOSED WIDENING /IMPROVEMENTS
- PAVEMENT REMOVAL
- NEW CONCRETE ISLAND
- PROPOSED TRAVEL PATTERN

MATCHLINE "A"  
SEE NEXT SHEET



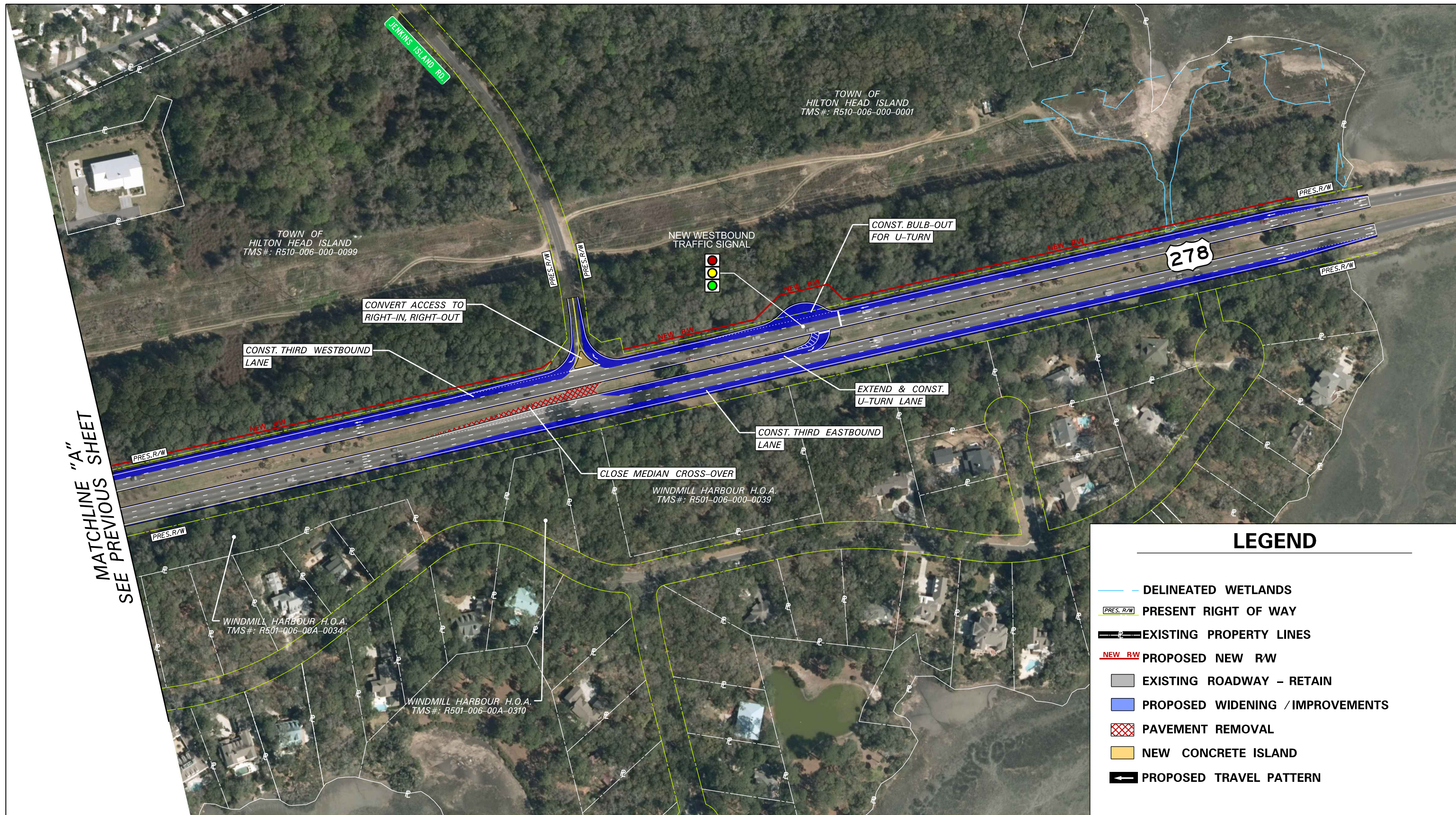
JENKINS ISLAND ACCESS MANAGEMENT SYSTEM  
 BEAUFORT COUNTY, SC

ALTERNATIVE NO. 2A  
 MODIFIED SUPER-STREET WITH TRAFFIC SIGNALS

PRELIMINARY ENVIRONMENTAL SCREENING REPORT

DATE  
 NOV. 20, 2015

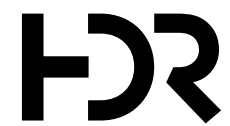
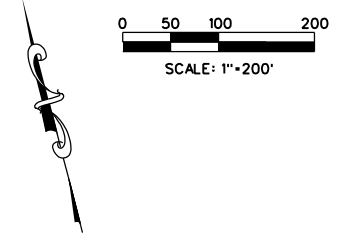
FIGURE  
 ALT. 2A - SHEET 1



MATCHLINE "A"  
SEE PREVIOUS SHEET

### LEGEND

- DELINEATED WETLANDS
- PRESENT RIGHT OF WAY
- EXISTING PROPERTY LINES
- PROPOSED NEW RW
- EXISTING ROADWAY - RETAIN
- PROPOSED WIDENING / IMPROVEMENTS
- PAVEMENT REMOVAL
- NEW CONCRETE ISLAND
- PROPOSED TRAVEL PATTERN



JENKINS ISLAND ACCESS MANAGEMENT SYSTEM  
 BEAUFORT COUNTY, SC

ALTERNATIVE NO. 2A  
 MODIFIED SUPER-STREET WITH TRAFFIC SIGNALS

PRELIMINARY ENVIRONMENTAL SCREENING REPORT

DATE  
 NOV. 20, 2015

FIGURE  
 ALT. 2A- SHEET 2